

AIR LINE STATE PARK
TRAIL REGION MASTER PLAN

Appendix A

Town-by-Town Sections



Air Line State Park Trail Portland, Connecticut

1

Middle Haddam Road
(Parking)



2

Breezy Corners Road



East
Hampton

3

Middle Haddam Road
(Crossing)

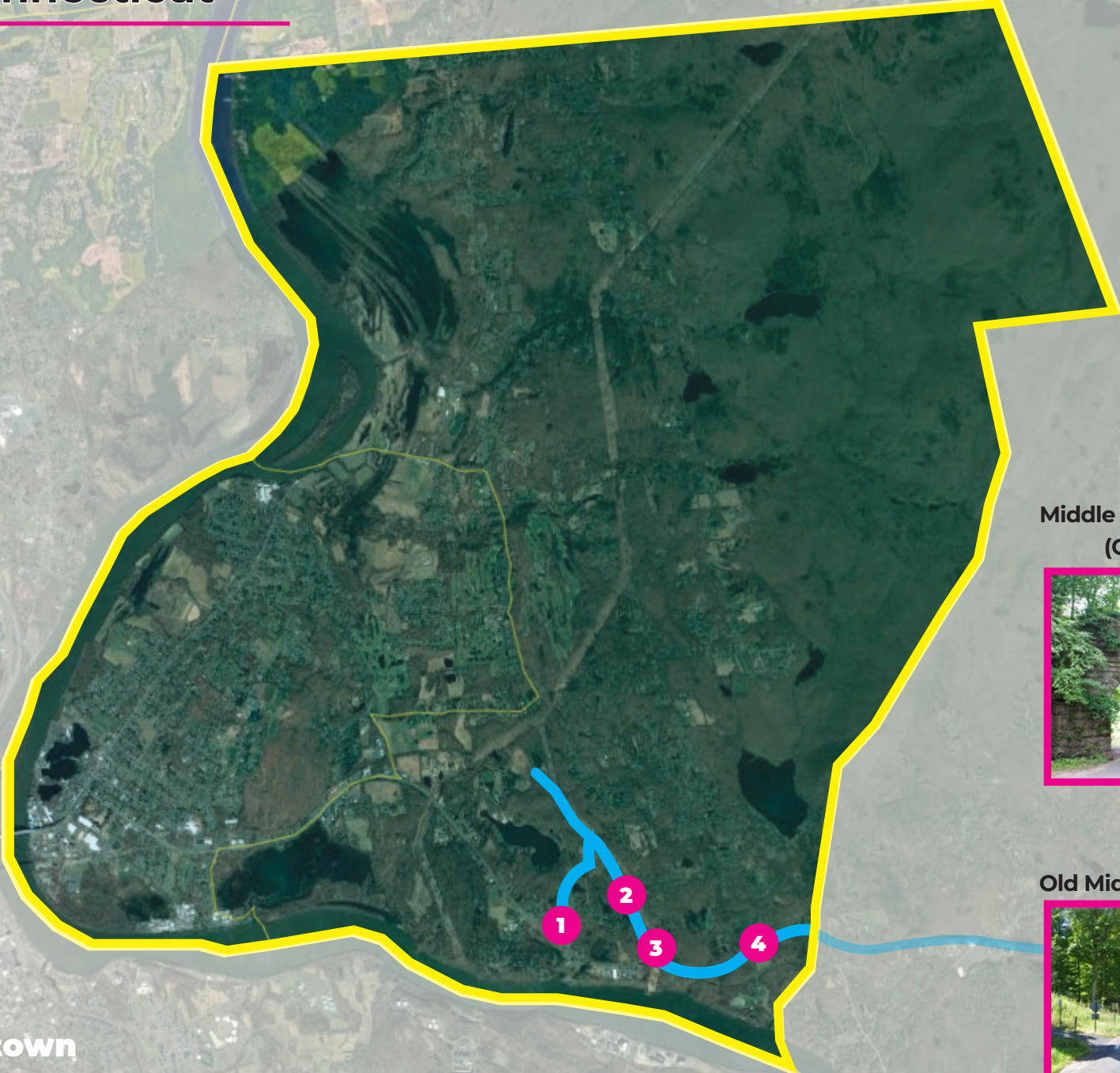


4

Old Middletown Road



Middletown



Air Line State Park Trail Region Master Plan Stakeholder Interviews

Town

Portland, Connecticut

Date

November 2021 - May 2023
(multiple conversations)

Attendees

- Air Line Trail Steering Committee (ALT)
- Lou Pear (ALT Co-Chair)
- Riz Rizzo (ALT Co-Chair)
- Kevin Grindle (Barton & Loguidice)

General Issues

- Work continues in order to extend the trail west to Middletown. This effort involves negotiating access through a number of private properties.
- The trail is seen as a key component to both recreational and economic development opportunities.
- A regional effort is underway to extend the Air Line Trail west to form the Central Connecticut Loop Trail.

Trail Maintenance

- Since Portland's segment of the Air Line Trail is not owned by the State, Portland's Park & Recreation and Public Works departments perform all trail maintenance activities.
- The Committee organizes well-attended trail cleanup days and volunteer-driven maintenance initiatives.

• MEETING MINUTES •

- Comments were received from Committee members at their monthly meetings between November 2021 and May of 2023.
- A primary focus of the Air Line Trail Steering Committee is to extend the trail west to Middletown. The first phase of this multi-phase project will be to extend the trail west to Route 17.
- The Committee and Town staff continue to work with business owners and Eversource to secure easements and license agreements in support of making these future trail connections.
- The committee continues to emphasize community outreach and engagement to inspire local citizens' enthusiasm for trail usage and foster momentum for upcoming project phases.
- Portland continues to seek funding for future trail construction efforts.

• BUDGETING •

- \$13,000 - Short term O&M budget for trail and parking area improvements.
- \$240,000 - Long term O&M budget for trail and parking area improvements which doesn't include work to extend the trail west to Middletown.

• Recommendations •

1. Continue to build support and secure funding to extend the trail west to Middletown.
2. Leverage the CTDEEP's ALSPT marketing efforts to build momentum and increase trail use in Portland.
3. Work within Portland's Complete Streets initiative to connect the trail to existing and proposed bike/ped routes.

Air Line State Park Trail East Hampton, Connecticut



Air Line State Park Trail Region Master Plan Stakeholder Interviews

Town

East Hampton, Connecticut

Date

November 2021 - May 2023
(multiple conversations)

Attendees

- Jeremy Hall (Dir. - Parks and Recreation)
- Jeremy DeCarli (Planning & Zoning Official)
- Matt Walsh (Dir. - Public Works)
- Kevin Grindle (Barton & Loguidice)

General Issues

- Significant efforts have been made to close the gap between Route 66 and Depot Hill Road, this ongoing effort is the project team's focus
- Trail improvements to mitigate drainage issues are an ongoing effort and are coordinated between CTDEEP and Town staff.
- Trail connectivity through the Town's business district is an ongoing area of improvement.

Trail Maintenance

- CTDEEP and Town staff continue to work collaboratively on trail resurfacing and drainage improvement projects.
- Pedestrian safety and roadway signage at trail crossings is a continued area of focus.
- Vegetation management along trails and trailhead parking areas is an ongoing effort.

• MEETING MINUTES •

- Comments were received from Town staff through informal meetings between November 2021 and May of 2023.
- Now that the trail gap between Route 66 and Depot Hill Road has received funding, this project will take significant resources and collaboration to bring to completion.
- Efforts are being focused on work to improve the cranberry bog parking area and adjacent trail connections.
- The Town is undertaking a streetscape improvement project with STEAP funding to enhance the village center. This project includes improvements to the ALSPT connection to Main Street.
- Enhance signage and trail promotion in order to better market local businesses and recreational and tourism opportunities.

• BUDGETING •

- \$43,000 - Short term O&M budget for trail and parking area improvements.
- \$500,000 - Long term O&M budget for trail and parking area improvements which doesn't include work on the gap section or the village center projects

Recommendations

1. Focus on closing the gap in the trail to connect Portland with East Hampton.
2. Improve connectivity into the village center.
3. Market local businesses and leverage the trail as a catalyst for economic development.
4. Continue to work closely with CTDEEP on routine maintenance efforts.

Air Line State Park Trail Colchester, Connecticut

Marlborough

Hebron

East Hampton

East Haddam

1

Bull Hill Road



2

River Road



3

River Road



4

Westchester Road
(Rte. 149)



5

Westchester
Park & Ride (Rte. 149)



Air Line State Park Trail Region Master Plan Stakeholder Interviews

Town

Colchester, Connecticut

Date

November 2021 - May 2023
(multiple conversations)

Attendees

- Matt Bordeaux (Planning Director)
- Jay Gigliotti (Wetlands Enforcement Agent)
- Kevin Grindle (Barton & Loguidice)

General Issues

- Improve trail signage to enhance user experience and economic development potential.
- Increase funding opportunities for municipalities to improve connections to the trail, such as the State committing funding for the CTDEEP Recreational Trails program annually.
- Boost trailside businesses to enhance the trail's appeal as a tourist destination.

Trail Maintenance

- Replace all gates to develop handicap accessible entrances onto the trail.
- Develop an alternative off-road connection under Route 2 between Old Hartford Road and the Route 149 Park & Ride.
- Consider developing the Route 149 trailhead parking area to include a picnic location and enhance the park's connection to the future Paper Mill Park.

• MEETING MINUTES •

- Comments were received from Town staff through informal meetings between November 2021 and May of 2023.
- Priority needs to be given to projects that enhance the connection from the ALSPT to Colchester's business district – via the Colchester spur and Lebanon Avenue streetscape improvements.
- How can CTDEEP and the town of Colchester work together to promote the ALSPT as a driver of economic development in town?
- Promote connections between the trail and other preserved open space.
- Work with CTDEEP and CTDOT to make connections between new housing developments on Lebanon Avenue and the spur trail.

• BUDGETING •

- \$138,000 - Short term O&M budget for trail and parking area improvements.
- \$470,000 - Long term O&M budget for trail and parking area improvements which doesn't include an off-road alternative at the Westchester Park & Ride.

Recommendations

1. Improve and refresh trail signage, gates, and kiosks to create memorable experiences for visitors.
2. Improve informal trailhead parking areas to create consistent user experience.
3. Promote ongoing conservation efforts within the Jeremy and Salmon River Watersheds.

Air Line State Park Trail Hebron, Connecticut

1

Old Hartford Road



2

Grayville Road



3

Old Colchester Road



4

Church Street (Rte. 85)



5

North Pond Road



6

Lebanon Road
(Rte. 207)



1

2

3

4

5

6

Colchester

Lebanon

Air Line State Park Trail Region Master Plan Stakeholder Interviews

Town

Hebron, Connecticut

Date

January 13, 2022

Attendees

- Craig Bryant (Dir. - Parks and Recreation)
- Pat Gallagher (Town Planner)
- Laurie Giannotti (CTDEEP - Greenways)
- Dave Buckley (CTDEEP - Park Supervisor)
- Jeanne Davies (CTRC&D)
- Kevin Grindle (Barton & Loguidice)

General Issues

- The trail crossing at Route 207 has poor sight lines and is in need of significant pedestrian safety improvements.
- The Town is working on developing a connection from the trail to their business district.
- Gaining a better understanding of the maintenance performed by CTDEEP would enable the town to better allocate funds for their trail work.

Trail Maintenance

- The Town encourages CTDEEP and CTDOT to work together to complete pedestrian safety improvements at all locations where the trail crosses state roadways.
- Consider adding signage along the trail to promote local businesses and upcoming activities.

• MEETING MINUTES •

- The Town is very interested in defining CTDEEP's responsibilities regarding trail maintenance. Clearly defining these roles would allow town staff to budget and schedule their work on the trail on a more consistent basis.
- The Town is actively working to complete a connection from the trail (near Route 207) to their Route 66 business district.
- The Town is seeking interested developers for properties on Route 85 adjacent to the trail crossing, these businesses have the potential to add restaurants/breweries and possibly restrooms at this location.
- Trailheads need to be updated to current accessibility standards in order for all visitors to have a safe and welcoming experience.

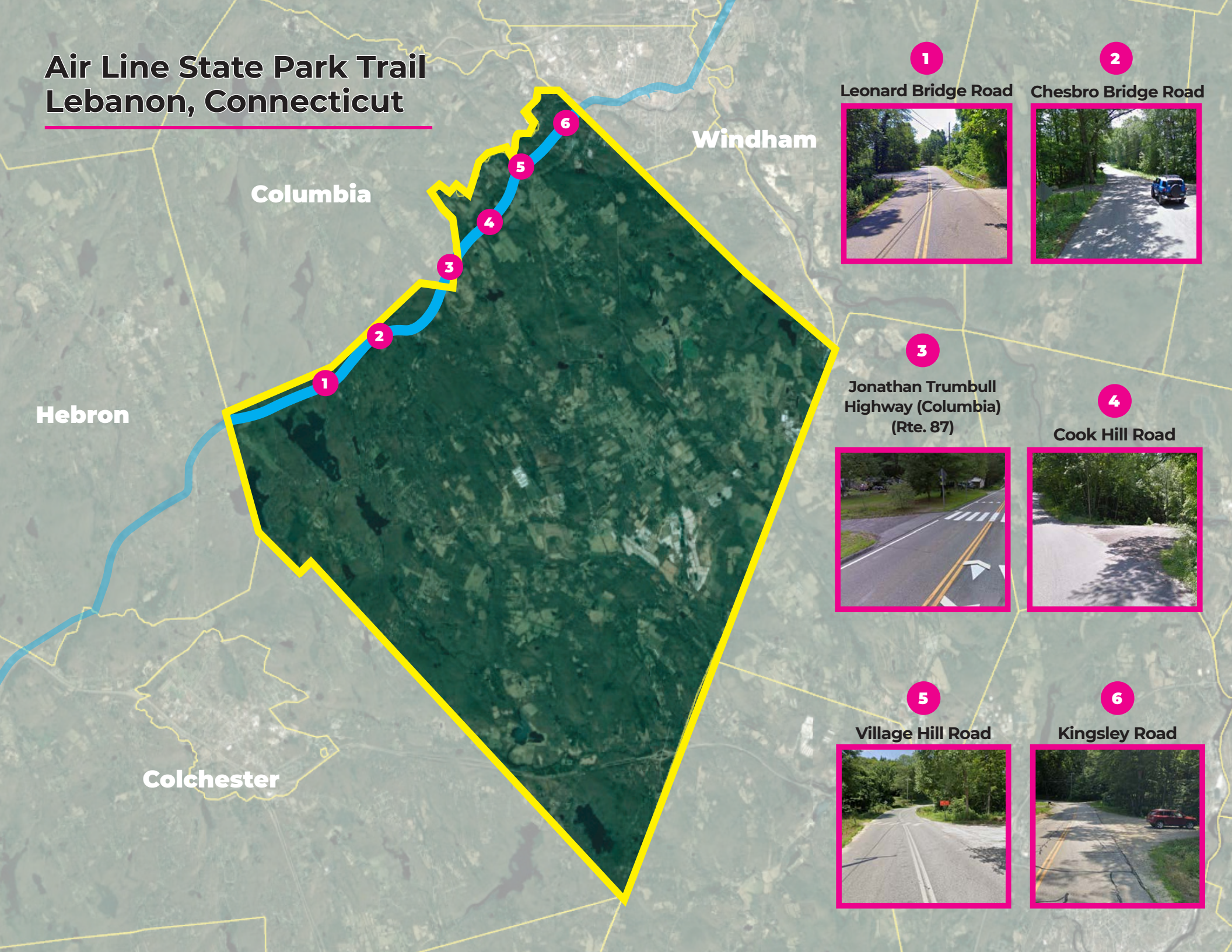
• BUDGETING •

- \$53,000 - Short term O&M budget for trail and parking area improvements.
- \$780,000 - Long term O&M budget for trail and parking area improvements which includes restrooms at Route 85 trailhead.

• Recommendations •

1. Clearly define the roles of CTDEEP and the Town.
2. Complete the connection from the ALSPT to Hebron's business district.
3. Increase pedestrian safety at Route 207 and 85 crossings with advanced warning signs and RRFBs.

Air Line State Park Trail Lebanon, Connecticut



Columbia

Windham

Hebron

Colchester

1

Leonard Bridge Road



2

Chesbro Bridge Road



3

Jonathan Trumbull
Highway (Columbia)
(Rte. 87)



4

Cook Hill Road



5

Village Hill Road



6

Kingsley Road



Air Line State Park Trail Region Master Plan Stakeholder Interviews

Town

Lebanon, Connecticut

Date

December 6, 2021

Attendees

- Phil Chester (Town Planner)
- Dean Hunniford (Dir. of Public Works/Facilities)
- Mike Lambert (Chairman, Rails to Trails)
- Kevin Grindle (Barton & Loguidice)

General Issues

- Install “DO NOT BLOCK GATE, CTDEEP” signs at all gates (roadside)
- Address gate condition issues, including missing pins, locks, and security.
- Place road/town signs at trail crossings (before gate).
- Update gates and locks.
- Set up mile markers.

Trail Maintenance

- Lebanon’s Rail-to-Trails Committee volunteers and Public Works Department assist with annual trail maintenance.
- Address soil erosion and control issues, particularly at trailheads, water crossings, and swales with debris.
- Town staff receive communications about issues across the entire 8-mile trail, often from non-resident users.

• MEETING MINUTES •

- Assess parking adequacy, identify property lines to resolve issues reported by property owners and trail users. Consider street light installation at trailheads.
- Improve markers/signage on Route 207/87 for vehicles nearing trailheads. Consider flashing pedestrian signs for safety and other measures to slow drivers at trailhead road crossings.
- Chesbro Bridge Road - Upgrade culvert under road to prevent regular flooding on trailhead’s southwesterly side.
- Trumbull Highway (Rte. 87) - Establish parking lot on northeast side of trailhead, include safe crossing.
- Cook Hill Road - Install trailhead warning sign for southbound traffic.
- Leonard Bridge Road, Village Hill Road, and Kinglsey Road – No changes needed.

• BUDGETING •

- \$45,000 - Short term O&M budget for trail and parking area improvements.
- \$410,000 - Long term O&M budget for trail and parking area improvements.

Recommendations

1. Eliminate invasive species along trail particularly northeast of Village Hill Road by Andrew’s Farm.
2. Conduct annual tree inspection and cutting when needed. (DEEP)
3. Conduct annual inspections of culverts and maintenance when needed. (DEEP)

Air Line State Park Trail Region Master Plan Stakeholder Interviews

Town

Columbia, Connecticut

Date

April 2023
(multiple emails)

Attendees

- Anne Dunnack (Chair - Open Space Comm.)
- Tom McGrath (Member - Conservation Comm.)
- Jeanne Davies (CTRC&D)
- Kevin Grindle (Barton & Loguidice)

General Issues

- Focus on making connections from the trail to the Town center, including the newly upgraded Recreation Park.
- Highlight local businesses and preserved open space.
- Promote Columbia's regional resources to trail users (recreation/dining/open spaces).
- How will trail users make the connection into Columbia (local vs. state roads)?

Trail Maintenance

- Improve connection from the trail at Route 87 and from Village Hill Road. This can be done via shared lane markings and/or dedicated bike/ped infrastructure improvements.
- Highlight the recently upgraded Recreation Park to provide related recreation opportunities and restrooms.

• MEETING MINUTES •

- Connecting the ALSPT to Columbia using Pine Street to Hennequinn Road brings the user to the newly upgraded Recreation Park which has playing fields, bathrooms, basketball court, pickleball courts, a playscape, swings, two pavilions, and well-marked and maintained hiking trails.
- Connection along Route 87 contains the seasonal Heartstone Winery and Szegda Farm Open Space which has hiking trails, a community garden, a portable restroom (in warm weather), and a three-sided shelter.
- Trail users need to go to Route 66 to find dining options. These options are best accessed from the Air Line Trail/Hop River Trail junction at the Columbia/Willimantic town line.

• BUDGETING •

- The project team understands Lebanon performs the maintenance activities on Columbia's portion of the ALSPT therefore, O&M costs for the ALSPT within Columbia are represented in Lebanon's budget breakdown.

• Recommendations •

1. Prioritize roadway improvements to connect trail users to the Town's center.
2. Highlight local businesses/resources and preserved open spaces to promote outdoor recreation beyond the ALSPT.
3. Seek funding for making bike/pedestrian improvements to Route 87 and local roads to increase bike/ped safety.

Air Line State Park Trail Windham, Connecticut

1

N. Parking to Bridge St. To Riverside Dr.



2

Riverside Dr. to Main St. (Rte. 66) to Jackson St.



3

Jackson & Union Street



4

Milk Street



5

Ash Street (Rte. 195)



6

Boston Post Road (Rte. 6)



Hampton

7

North Windham Road (Rte. 203)



8

Boulevard Road



Lebanon

Air Line State Park Trail Region Master Plan Stakeholder Interviews

Town

Windham, Connecticut

Date

April 13, 2022

Attendees

- Jim Bellano (Dir. - Economic Development)
- YukShan Li (Manager - Economic Development)
- Matthew Vertefeuille (Town Planner)
- Bryan Tarbell (Town Engineer)
- Jeanne Davies (CTRC&D)
- Kevin Grindle (Barton & Loguidice)

General Issues

- Focus on creating trail connection between Bridge Street and Jillson Square. This connection will either utilize Riverside Drive or Route 66 (Main Street).
- Promote future connections to the Windham White Water Park and the recently completed community center.
- Consider a pedestrian bridge at Route 203 crossing.

Trail Maintenance

- Perform pavement repairs to seal cracks and extend life of the pavement.
- Promote opportunities to preserve environmentally sensitive white cedar bog while encouraging access to this unique trail feature through the Town's recently acquired adjacent property.

• MEETING MINUTES •

- Consider the opportunities to connect the trail through downtown. Riverside Drive offers unique views of the rail yard, river, and footbridge, while Main Street offers exposure to local businesses and restaurants.
- The trail's visual appeal needs to be improved between Jillson Square and Tuckie Road, this may include re-decking the Natchaug River bridge, establishing native plantings and pollinator gardens, creating nodes of interest at viewsheds, and screening adjacent industrial land uses.
- Work collaboratively with CTDEEP and CTDOT to explore options to increase pedestrian safety at the Route 203 trail crossings. This includes a pedestrian bridge constructed over the state highway and installation of sidewalks from the trail to North Windham School.

• BUDGETING •

- \$65,000 - Short term O&M budget for trail and parking area improvements.
- \$2.8 Million - Long term O&M budget for trail and parking area improvements which include a pedestrian bridge at Route 203.

• Recommendations •

1. Complete the connection through downtown from Bridge Street to Jillson Square.
2. Develop the town-owned property behind Tractor Supply to provide trail access and other TBD trail amenities.
3. Work with CTDEEP and CTDOT to improve the Route 203 crossing with a pedestrian bridge and sidewalks to North Windham Elementary School.

Air Line State Park Trail Chaplin, Connecticut

Pomfret



1

Chewink Road



Hampton

1

Windham

Air Line State Park Trail Region Master Plan Stakeholder Interviews

Town

Chaplin, Connecticut

Date

December 3, 2021

Attendees

- Juan Roman (First Selectman)
- Jay Gigliotti (Zoning Enforcement Officer)
- David Stone (Public Works Supervisor and Recreation Commission Chair)
- Kevin Grindle (Barton & Loguidice)

General Issues

- Review of off-site activities (such as logging) that are causing drainage and run-off issues on the trail.
- Discuss improvements to the trailhead parking lot at Chewink Road.
- Consider pedestrian safety at trail crossings, with discussion regarding a proposed pedestrian bridge at Chewink Road.

Trail Maintenance

- Hazard tree removal is ongoing, but needs to be a short-term focus for CTDEEP.
- The public works department assists CTDEEP with maintenance on the trail and trailhead parking lots.
- Drainage improvements are necessary at Chewink Road parking lot before the roadbed is compromised.

• MEETING MINUTES •

- Trailhead parking, gates, and signage need to be updated and refreshed so that visitors have a positive first experience of the park.
- Drainage improvements are necessary at Chewink Road parking lot before the roadbed is compromised.
- Address concerns regarding unauthorized vehicles/ATVs on the trail.
- Assess protocols for garbage removal and management of pet waste and horse manure on trail.
- Improve parking and sight lines at intersection of Chewink and Lynch Roads.
- Develop intersection safety improvements to enhance pedestrian safety and reduce vehicle speed.
- Consider long-term development of adjacent land which is zoned light industrial.

• BUDGETING •

- \$34,000 - Short term O&M budget for trail and parking area improvements.
- \$2.2 Million - Long term O&M budget for trail and parking area improvements which includes a pedestrian bridge at Chewink Road.

• Recommendations •

1. Complete drainage improvements at the Chewink Road parking lot to prevent further damage to the road.
2. Consider pedestrian safety improvements to the Chewink and Lynch Road intersection, this may include a pedestrian bridge.
3. Update signage and consider access improvements to limit unauthorized access.

Air Line State Park Trail Hampton, Connecticut

Pomfret

Chaplin

1
South Brook Road



2
Hartford Tpke. (Rte. 6)



3
Potter Road



4
Estabrooks Road



5
Station Road



6
Old Griffin Road



7
Kenyon Road



8
Lewis Road



Air Line State Park Trail Region Master Plan Stakeholder Interviews

Town

Hampton, Connecticut

Date

November 2021 - May 2023
(multiple conversations)

Attendees

- Alan Cahill (First Selectman)
- John Guskowski (Consultant Town Planner)
- Planning & Zoning Commission Members
- Kevin Grindle (Barton & Loguidice)

General Issues

- Improve continuity between ALSPT and other preserved open spaces such as Goodwin State Forest, Natchaug State Forest, Trail Wood - Edwin Way Teale Sanctuary and Blue Flag Meadow
- Town performs a limited amount of maintenance on the trail and works collaboratively with CTDEEP in these efforts
- Concerns regarding unauthorized vehicles/ATVs on the trail

Trail Maintenance

- Hazard tree removal is ongoing but needs to be a short-term focus for CTDEEP.
- Public Works Department assists CTDEEP with maintenance on the trail and trailhead parking lots.
- Trail surface between South Brook Street and Station Road is in serious need of resurfacing and drainage improvements.

• MEETING MINUTES •

- Comments were received from town staff and commission members during multiple public and informal meetings between November 2021 and May of 2023.
- Significant infrastructure improvements have not been made on the trail for more than two decades - it is time for CTDEEP to make necessary investments.
- Improvements to the trail's surface is needed to make the trail passable.
- Invasive species management needs to be a priority.
- Trailhead parking, gates, and signage need to be updated and refreshed so visitors have a positive first impression of the park.
- Consider how the park can leverage economic development for the town and northeastern CT region.

• BUDGETING •

- \$58,000 - Short term O&M budget for trail and parking area improvements.
- \$515,000 - Long term O&M budget for trail and parking area improvements which includes \$200k allowance for resurfacing trail.

• Recommendations •

1. Complete trail resurfacing, improve signage, and enhance parking to access and promote connectivity.
2. Clearly define the roles of CTDEEP and the Town.
3. Hampton is prepared to advocate for CTDEEP to receive the funding necessary to improve their state park.

Air Line State Park Trail Pomfret, Connecticut

Putnam

6
Pomfret Street (Rte. 44)



7
Needles Eye Road



9
Holmes Road



8
Wrights Crossing Road



1
Hampton Road
(Rte. 97)



2
Brooklyn Road



3
Mashamoquet Road
(Rte. 44)



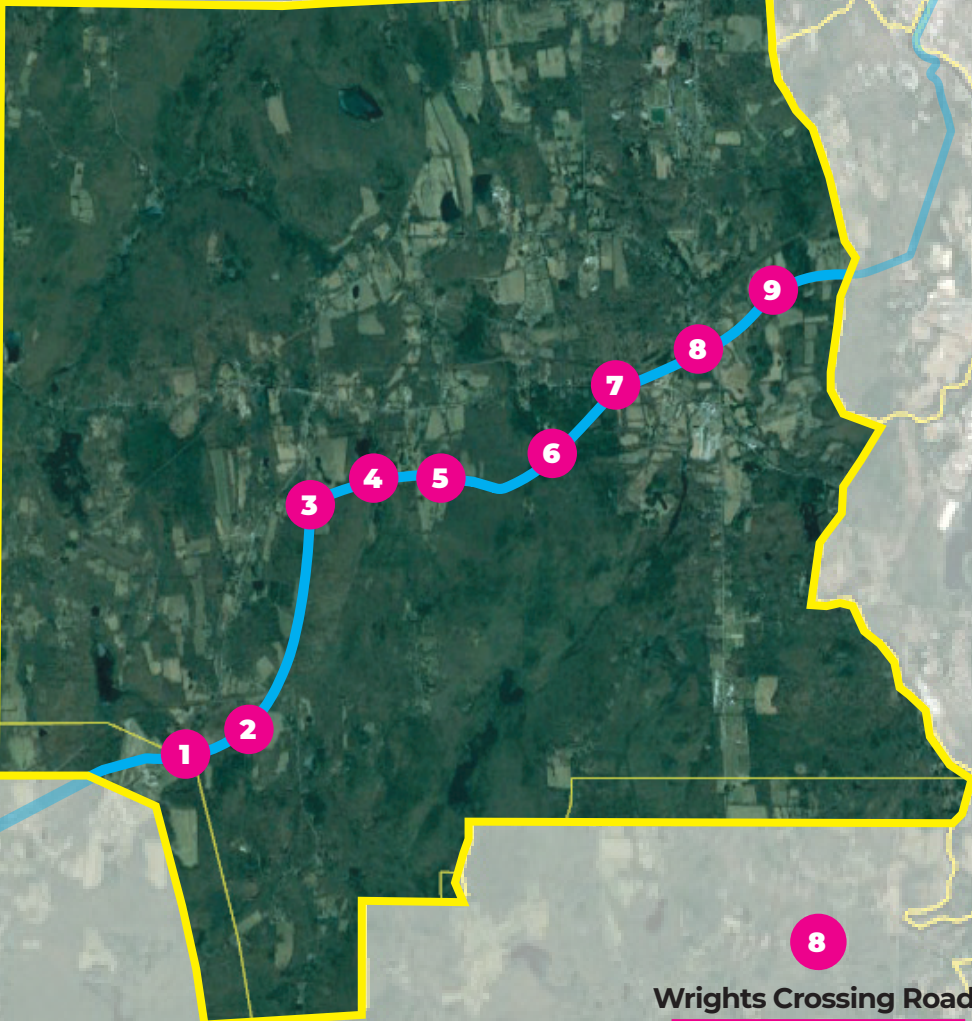
4
Osgood/Covell Road



5
Babbitt Hill Road



Hampton



Air Line State Park Trail Region Master Plan Stakeholder Interviews

Town

Pomfret, Connecticut

Date

July 26, 2022

Attendees

- Maureen Nicholson (First Selectman)
- Jeanne Davies (CTRC&D)
- Kevin Grindle (Barton & Loguidice)

General Issues

- Focus on priority trailhead access at Town Hall, Community Center, Pomfret Forest and Pomfret Rec Park.
- Better trail signage is necessary, this includes trail logos and informational signage.
- The Town performs a limited amount of maintenance on the trail and works collaboratively with CTDEEP in these efforts.

Trail Maintenance

- Pomfret's trail is 7 miles long. To date, 4 miles of it has been resurfaced.
- Pomfret's public works department provides 5 hours per week of maintenance through summer months and mows the edges of the trail once a year.
- Maintenance activities include weed whacking, debris removal, small drainage improvements, and minor surface improvements.

• MEETING MINUTES •

- Parking is available at Route 97, Brooklyn Road, Babbit Hill Road, Covell Road, Wrights Crossing, Town Farm Road (Putnam).
- New gates are needed at Wrights Crossing and Holmes Road.
- Additional parking is recommended for the Pomfret Station trailhead.
- It is important to define maintenance activities which CTDEEP is responsible for so the Town can plan and budget for work that is the town's responsibility.
- 7 miles of the ALSPT are within Pomfret and there are many opportunities to connect this trail to other preserved lands. These connections need to be promoted on a regional basis.
- Trail amenities such as public art installations, pocket parks and composting toilets should be considered.

• BUDGETING •

- \$81,000 - Short term O&M budget for trail and parking area improvements.
- \$690,000 - Long term O&M budget for trail and parking area improvements which doesn't include allowance for Putnam connection which is currently underway.

• Recommendations •

1. Complete the remaining trail resurfacing project.
2. Clearly define the roles of CTDEEP and the Town.
3. Improve trail signage and upgrade gates and railings.
4. Provide additional trail amenities to create an enhanced user experience.

Air Line State Park Trail Putnam, Connecticut

Thompson

1

Modock Road



2

River Road



3

Town Farm Road



4

River Road to
Quinebaug Ave.

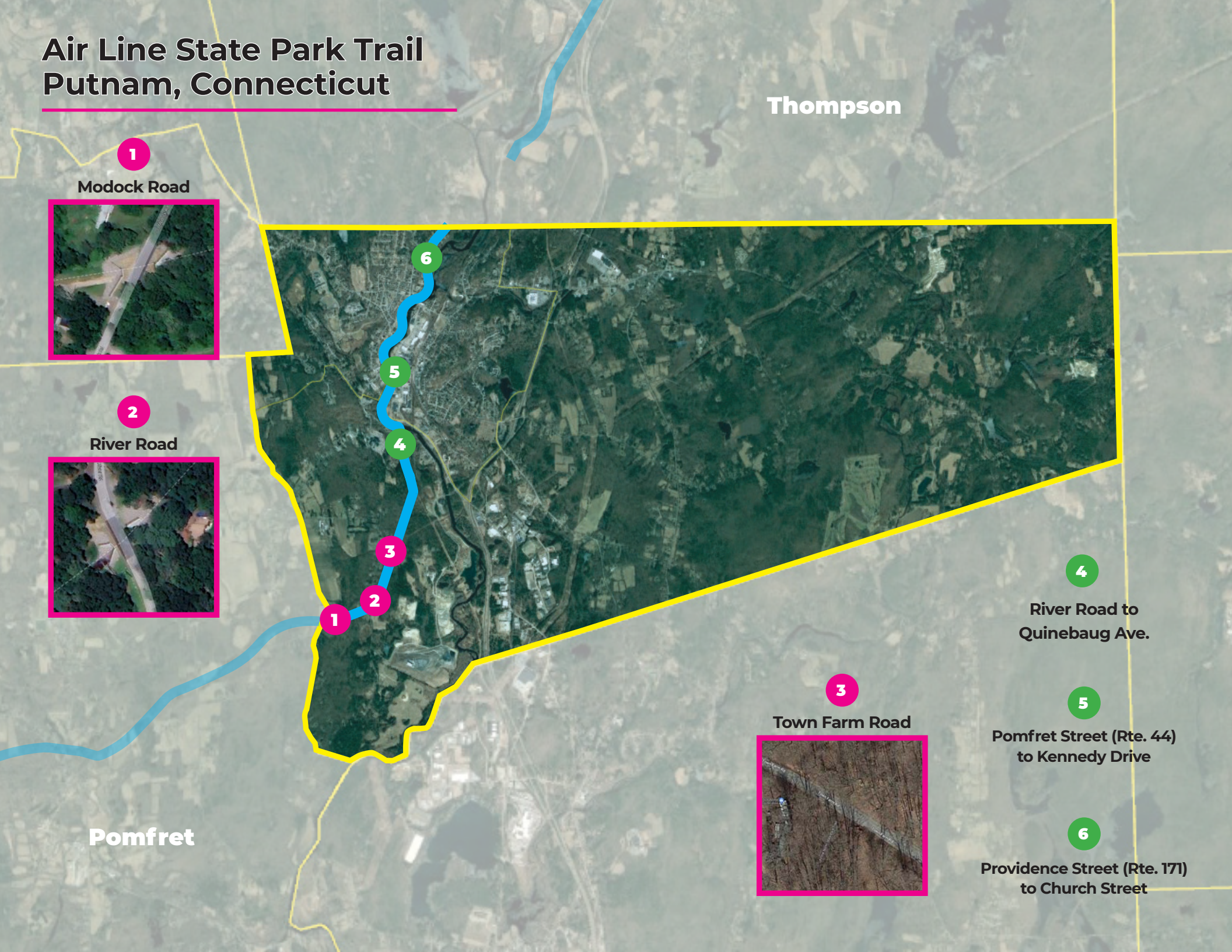
5

Pomfret Street (Rte. 44)
to Kennedy Drive

6

Providence Street (Rte. 171)
to Church Street

Pomfret



Air Line State Park Trail Region Master Plan Stakeholder Interviews

Town

Putnam, Connecticut

Date

May 3, 2022

Attendees

- Barney Seney (Mayor)
- Elaine Sistare (Town Manager)
- Delpha Very (Dir. of Community Development)
- Travis Serrine (Highway Superintendent)
- Bruce Fitzback (Land Use Agent)
- Jeanne Davies (CTRC&D)
- Kevin Grindle (Barton & Loguidice)

General Issues

- ALSPT stakeholders must prioritize closing gaps to Pomfret and Thompson along with the Putnam River Trail
- Leverage the ALSPT as an economic driver for the region
- Strengthen trail continuity through place-making efforts

Trail Maintenance

- Putnam's highway and parks and recreation departments assist with annual trail maintenance endeavors.
- A large portion of the trail will be either paved or on-road through the town center, and will require more extensive maintenance budgets than a rural stone dust trail.
- Erosion and streambank restoration budgets need to be factored in by the town and state.

• MEETING MINUTES •

- The town is excited to have received funding to complete the connection to Pomfret.
- Trail consultants are working to determine the route to connect the ALSPT to Thompson.
- More events, such as "Tackle the Trail" should be held and promoted in the park - this would draw more tourism to the area.
- Market Putnam as a regional hub for the trail.
- Focus on the user's continuity of experience when factoring in way-finding, trail surfaces, maintenance activities, etc.
- Seek funding through programs that reach beyond CTDEEP Recreation Trails, such as CTDOT, LOTCIP, CCGP, ARPA, USDA, Rails to Trails, etc.

• BUDGETING •

- \$64,000 - Short term O&M budget for trail and parking area improvements.
- \$1.3 Million - Long term O&M budget for trail and parking area improvements which doesn't include allowance for Pomfret connection which is currently underway.

• Recommendations •

1. Short term - continue to work with trail consultants to connect the ALSPT to Pomfret.
2. Long term - continue to work with trail consultants to connect the ALSPT to Thompson.
3. Connect the ALSPT with the downtown business district.

Air Line State Park Trail Thompson, Connecticut

1
West Thompson Road to
Riverside Drive (Rte. 12)



2
Thompson Road (1)
(Rte. 193)

3
On-Ramps to I-395
from Rte. 12



4
Thompson Hill Road
(Rte. 200)



5
Sunset Hill Road



6
Lowell Davis Road



7
I-395



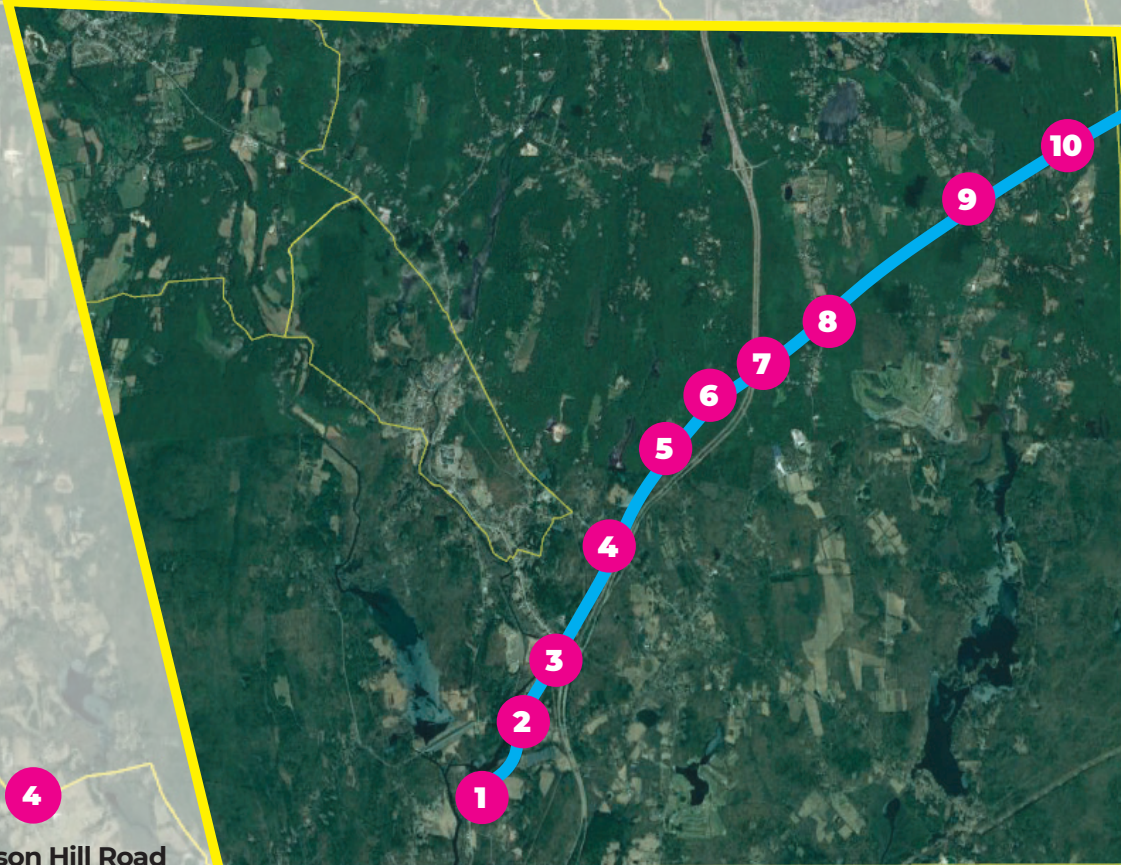
8
Thompson Road (2) (Rte. 193)



9
Sand Dam Road



10
East Thompson Road



Putnam

Air Line State Park Trail Region Master Plan Stakeholder Interviews

Town

Thompson, Connecticut

Date

July 26, 2022

Attendees

- Tyra Penn-Gesek (Dir. - Planning & Development)
- Karen Durlach (Chair - Trails Committee)
- Paul Provost (Member - Trails Committee)
- Jeanne Davies (CTRC&D)
- Kevin Grindle (Barton & Loguidice)

General Issues

- Making the connection between Putnam & Thompson is critical.
- Issue of erosion stemming from offsite drainage (including state roadways) warrants attention
- Trail resurfacing needs to be completed.
- Focus on implementing action items presented in the Thompson Trail Town Action Plan.

Trail Maintenance

- Thompson's trail committee performs minor maintenance on the trail and relies on the CTDEEP to perform more extensive work.
- Trail surface conditions are in need of improvement, this includes correcting multiple wash-outs and resurfacing large portions to make them passable by all skill levels.

• MEETING MINUTES •

- Completing the gap from Putnam to Thompson is the highest priority project.
- CTDEEP and CTDOT need to work collaboratively to correct the drainage issues from state roads that is causing the trail to wash out during heavy rain events.
- New gates and intersection improvements including crosswalks and signage are necessary throughout the park.
- Parking at local road crossings needs to be evaluated for capacity and safety.
- Amenities such as benches, trash cans, picnic areas and year-round composting toilets are recommended.
- Proceed with Thompson Trail Town Action Plan Recreation Recommendations – including those for the Train Wreck site.

• BUDGETING •

- \$82,000 - Short term O&M budget for trail and parking area improvements.
- \$765,000 - Long term O&M budget for trail and parking area improvements which doesn't include allowance for Train Wreck site improvements.

• Recommendations •

1. Assist CTDEEP and Putnam in completing the gap between Putnam and Thompson.
2. Resurface the trail and make improvements to correct ongoing drainage issues.
3. Proceed with design and construction of multi-phase projects at the Train Wreck site.