

ATTRACTIONS IN PUTNAM, CT

At just over 2-miles, the Putnam River Trail begins at Arch Street and winds its way north along the eastern shore of the Quinebaug River through woodlands and parks. Five historic exhibits are located along the trail commemorating Putnam's railroad history, textile mills, and founding citizens.

There are a number of scenic views including Cargill Falls, as well as three bridges adjacent to the trail including a 200-foot pedestrian bridge built on the stone foundation of an old railroad trestle.

While you're in the neighborhood, we have some things to show you.



BOUTIQUES

Discover a local business for all your needs. From clothing to accessories and jewelry, Putnam offers shoppers a unique experience of boutiques dotting the streets throughout the downtown and side-street areas.

Providence Street • Kennedy Drive
Main Street • School Street

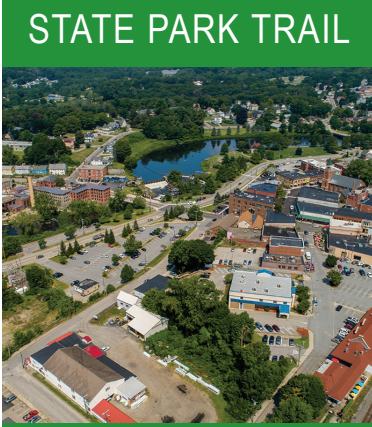
Antique hunters from scavengers to connoisseurs will be delighted by the side-by-side shops in downtown.

6. Antiques Marketplace
109 Main Street

7. Jeremiah's Antique Shop
26 Front Street



AIR LINE STATE PARK TRAIL



PUTNAM

ARTS & CULTURE

1. Putnam Lions Memorial Dog Park
16 Kennedy Drive
Off-leash large and small breed separated dog park with ample shade and benches, open dawn to dusk.

2. Storywalk [River Trail]
Combining reading with physical activity, the interactive story trail winds along the trail with laminated book pages posted on signs along the path – starting at the Riverview Marketplace Pavilion.

3. Sculptures on the River [River Trail]
Collection of woodland animals, abstract pieces and whimsical sculptures made possible by artist Dale Rogers.



4. Gertrude Chandler Warner Boxcar Children's Museum
1 South Main Street
BoxcarChildrenMuseum.com

Dedicated to the life and work of Gertrude Chandler Warner, the author of *The Boxcar Children* books. Renovated in 2020, the museum is open on weekends from June through the beginning of Oct. - closed Labor Day weekend.

EVENTS & POP UPS



Putnam Saturday Farmers Market sets up shop every Saturday, 10:00am to 1:00pm – June to October, under the pavilion along the Quinebaug River at the south end of the Putnam River Trail [18 Kennedy Drive, Putnam, CT 06260]. The market features fresh produce from local farms, meats/eggs/dairy products, baked goods, and creations from area artisans.

The town's various **community events** celebrate all that Putnam has to offer – from the arts to fine dining, boutique shopping, performances to live music. With annual street festivals and new 'pop-up' weekend events, Putnam welcomes weekend visitors to explore.

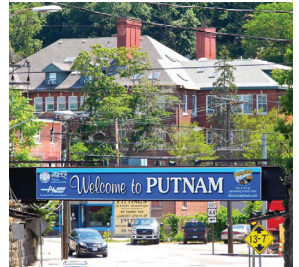


AIR LINE STATE PARK TRAIL PUTNAM

Mileage	Date
Mileage	Date
Mileage	Date
Mileage	Date
Mileage	Date
Mileage	Date
Mileage	Date

Putnam CONNECTICUT'S BEST KEPT SECRET

The charming New England town of Putnam, CT is nestled on the banks of the Quinebaug River in the northeast corner of the state. Originally known as Aspinock, the town was incorporated in 1855 from sections of the surrounding towns of Killingly, Pomfret, and Thompson, and named in honor of Revolutionary War General Israel Putnam. The town of Putnam is celebrated for its antique markets and boasts an "Arts & Al Fresco" motif – with a variety of restaurants, bars, breweries, cafes, galleries, boutiques, theaters, and more calling Putnam home.



5. Theatre of Northeastern CT at The Bradley Playhouse
30 Front Street
TheBradleyPlayhouse.org

Bridging years of extraordinary productions that have regaled generations of patrons.



Galleries [Downtown]
Representing local and regional artists in a range of works and mixed medias.

WHERE TO EAT



When it comes to a drink to sip, bite to eat or sweet treat to indulge in, Putnam has an option for every mood. The town boasts more

than a dozen locally owned restaurants and cafes, featuring cuisine across the board; American, Asian, Brew Pub, Irish, Italian, Mexican, Seafood, and Thai.

Three craft breweries dot downtown; Bear Hands Brewing Company (75 Main St, Suite 1); Centerline Brewing (114-120 Main St); The Crossings Restaurant & Brew Pub (45 S Main St). Seasonal outdoor patio seating is available at several businesses.

TRAIL TIPS

- Trails are open dawn to dusk.
- Ample parking is available in small open lots along Kennedy Drive, in addition to a public lot at the intersection of Kennedy Drive and Pomfret Street (Rt 44).
- Public restrooms and ChargePort electric charging stations are located at the Kennedy Drive/Pomfret Street public parking lot.

For additional copies of this map, please email delpha.very@putnamct.us

AIR LINE STATE PARK TRAIL HISTORY

In the 1960s, over fifty miles of the rail bed from East Hampton to the Massachusetts border were acquired by the Connecticut State Park System to construct a recreational linear park.

This trail has a colorful past. The "Air Line" was envisioned as a direct line between New York City and Boston. It opened in 1873 and 25 miles shorter, it offered fierce competition to the shoreline rail service from New York to Boston. The mesmerizing, white-painted express train, known as the Ghost Train, made the run between Boston and New York in six hours, a record time for 1884.

The construction of the new rail line contained ambitious feats of engineering, blasting through granite hills, navigating deep valleys and rivers along the route. The Air Line Railroad's "Ghost Train" began in 1891 and was designed to attract wealthy travelers. Luxurious Pullman cars were painted white with gold trim, and the staff of the train wore formal white uniforms.



The catastrophic Great East Thompson Train Wreck on December 4, 1891 clouded the introduction of this fast new rail service. It was one of the greatest train wrecks in American history, and the only train accident to involve four trains. Still, over the next four years, successful businessmen and prominent citizens, including President Benjamin Harrison, rode the increasingly well-known Ghost Train. As it sped across eastern Connecticut, its luminescent cars were easily recognized, especially at twilight.

In the new 20th century, technology increased, railroad engines became faster, rail cars became longer, everything became heavier and after World War II, access to automobiles and interstate highways reduce the profitability of rail travel. The quaintness of the Air Line's winding grades as well as the weight restrictions of the spindly trestle bridges began to show its limitations. During its construction, the Air Line Railroad was expensive and controversial, but its operational costs would lead to its ultimate demise and abandonment. Passenger service on the Air Line ceased by 1937, and the track was completely abandoned by 1965.

Today, visitors enjoy scenic panoramas, village life, wildlife, hiking trails, and the tranquility of the rural landscape. The United States Department of the Interior recognized the southern section of the Air Line State Park Trail as a national recreation trail in 2002.

For more maps in this series, email outreach@ctrcd.org or visit ctrcd.org.



PARKING

Many parking areas serve the Air Line State Park Trail. Some primary locations are:

THOMPSON

- Large parking lot at 121 Riverside Dr, (Rt 12, Mechanicsville)
- Pull off for a few cars at Air Line trail crossing, 388 Sand Dam Rd
- 5 car parking lot, located at 662 East Thompson Rd, near the junction of New Rd

PUTNAM

- 18 Kennedy Dr, across from Canal
- 80 Kennedy Dr, directly across from the South entrance of Simonzi Park
- 98 Kennedy Dr
- 165 Kennedy Dr (DMV lot)

POMFRET

- 18 car paved parking lot at Pomfret Station, 13 Railroad Ave (off of Rt 169)
- Parking adjacent to trail, in Town owned paved parking lot, west side of Pomfret Town Hall
- Parking available in rear of Town owned paved parking lot at Pomfret Community Center, 207 Mashamoquet Rd (Rt. 44)

HAMPTON

- Potter Rd 0.6 mile north of its intersection with Rt 6 in Goodwin State Forest

WINDHAM

- Intersection of Beaver Hill Rd and Windham Rd (Rt 203) in North Windham, at the CT Eastern Railroad Museum and in downtown Willimantic.

COLUMBIA

- Rt 87, Cook Hill Rd and Village Hill Rd

EAST HAMPTON

- Depot Hill, Cobalt; Aldens Crossing (at Rt 16); Forest St (Between Hayes Rd and Childs Rd); Town Hall Rd (Off Main St.); Main Street; Watrous Street; Smith Street (at Cranberry Bog)

PORTLAND

- Parking at 82 Middle Haddam Rd